

Road Construction of U.S. 15,
Moving of the Dining Hall and
Caretakers House –
1962 and 1964

Pictures Taken By Ned Ritter, Contractor and
Rev. Harold F. Springman

CENTRAL

OAK



HEIGHTS





Campers Arriving



U.S. 15 looking North - COH Dining Hall on the Hill



U.S. 15 North-COH dining hall the on hill



U. S. 15 Looking North-COH Dining Hall on the Left



U.S.15 Looking South to Bylerly Farm-COH Old Caretaker's House on Right



Carving Out the Hillside













View from the Old Point



The Old Point on the Right



The Old Point



Many Memories Going Up in Smoke



U.S. 15 Looking South







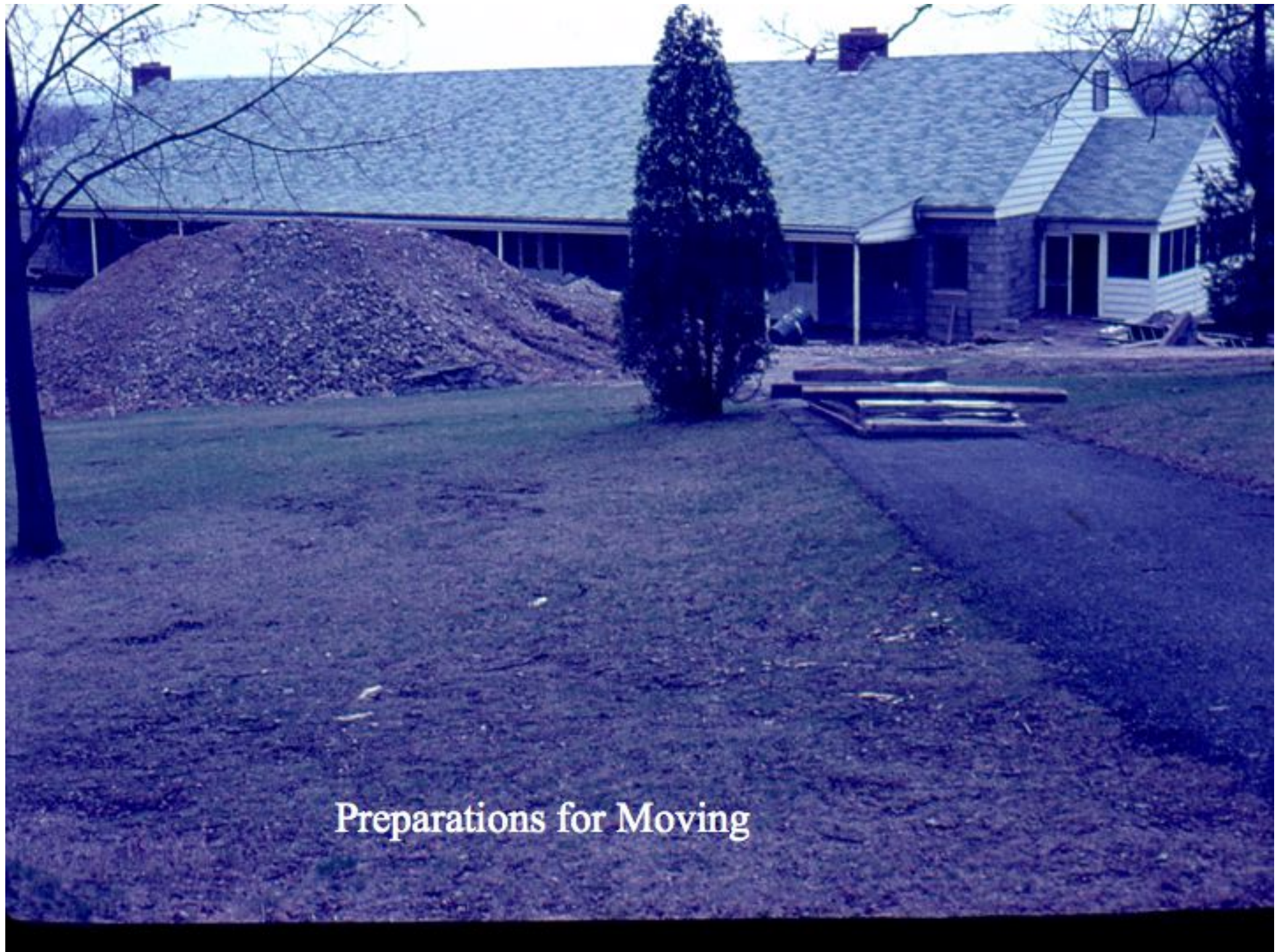
Blasting



Arrival of Steel Beams



Arrival of Steel



Preparations for Moving



Dining Hall





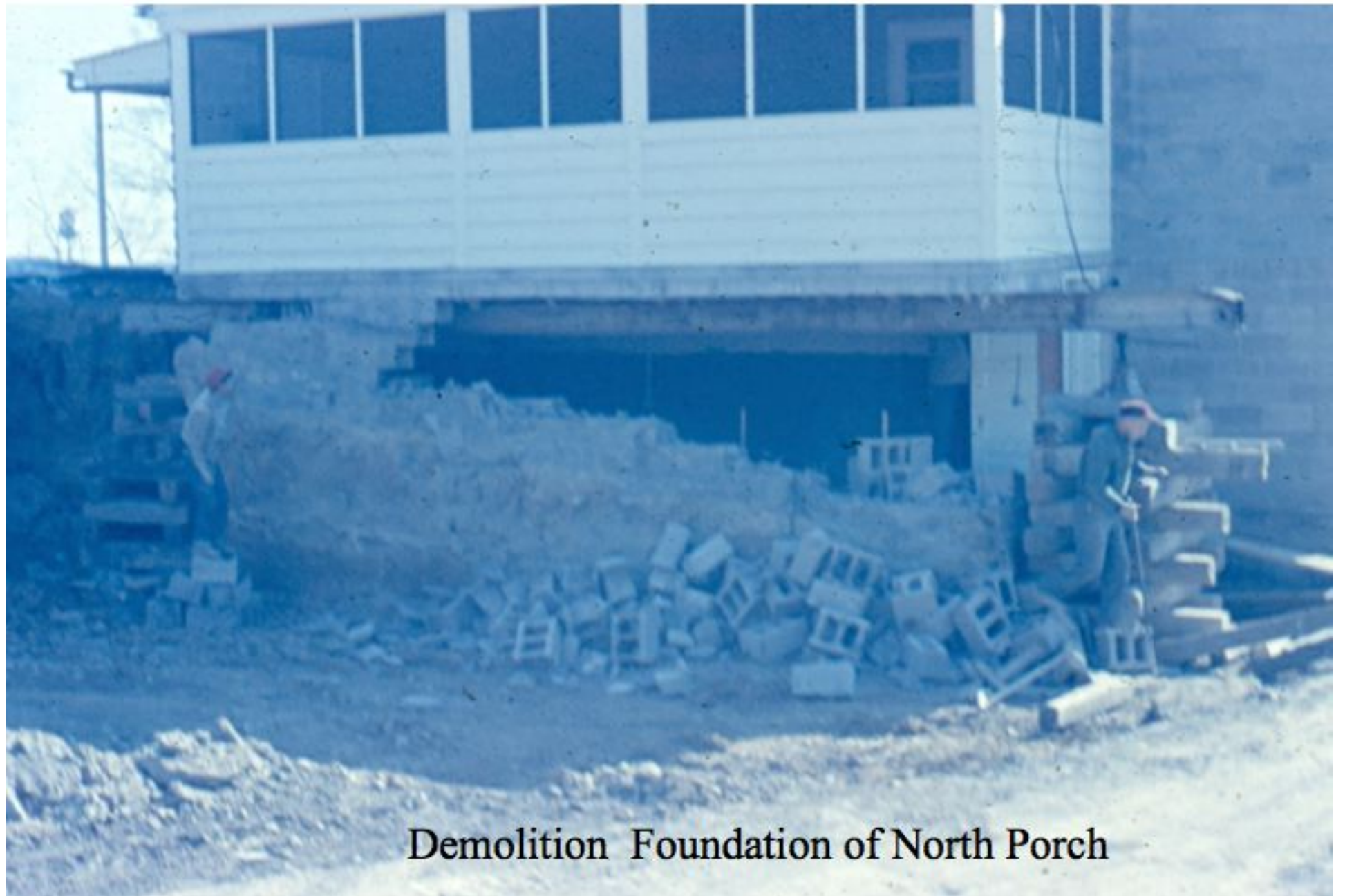
Excavating Bank



March - Weather Delay



View Under North Porch



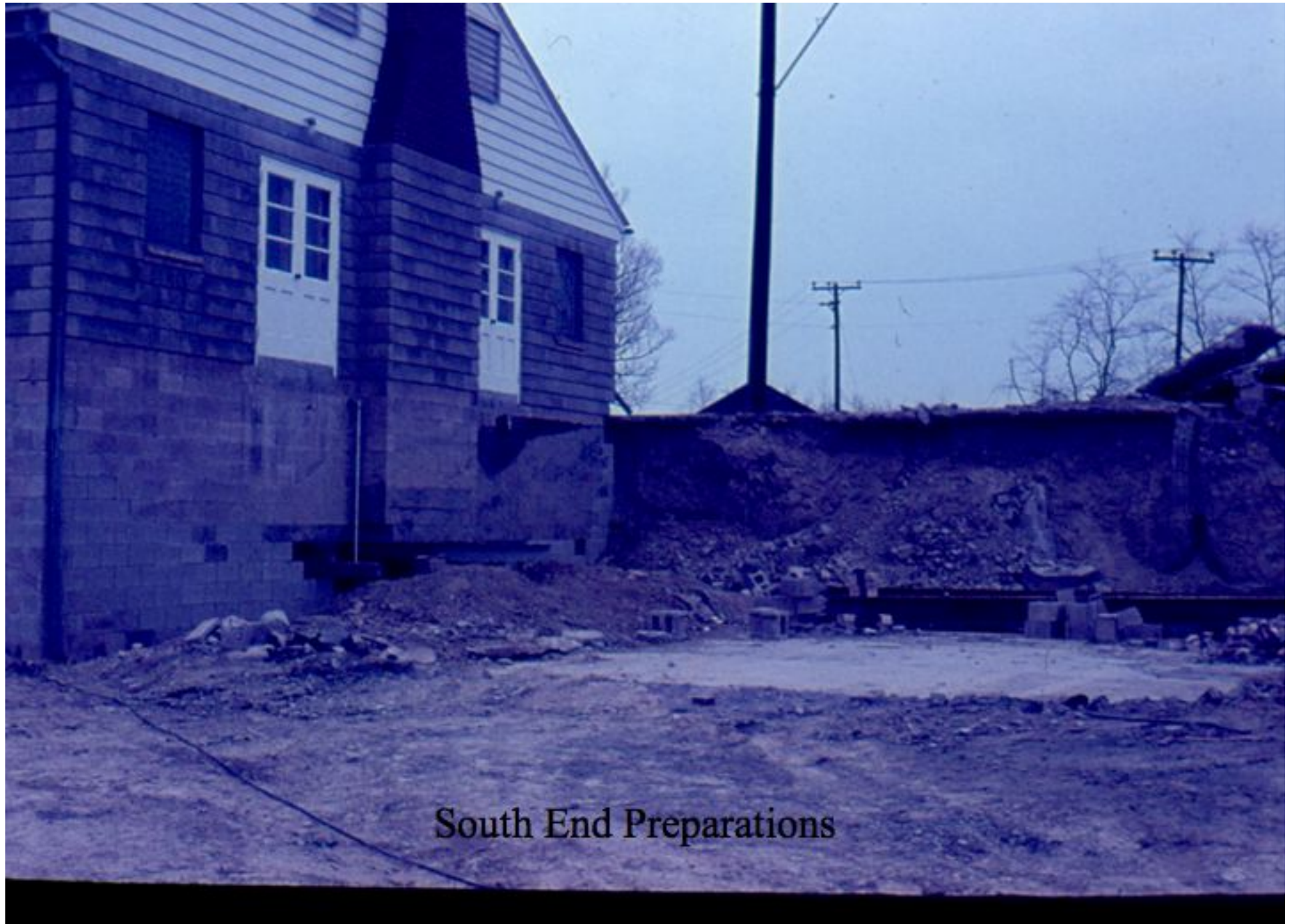
Demolition Foundation of North Porch



Demolition of West Steps



Ready for Placement of Steel Beams



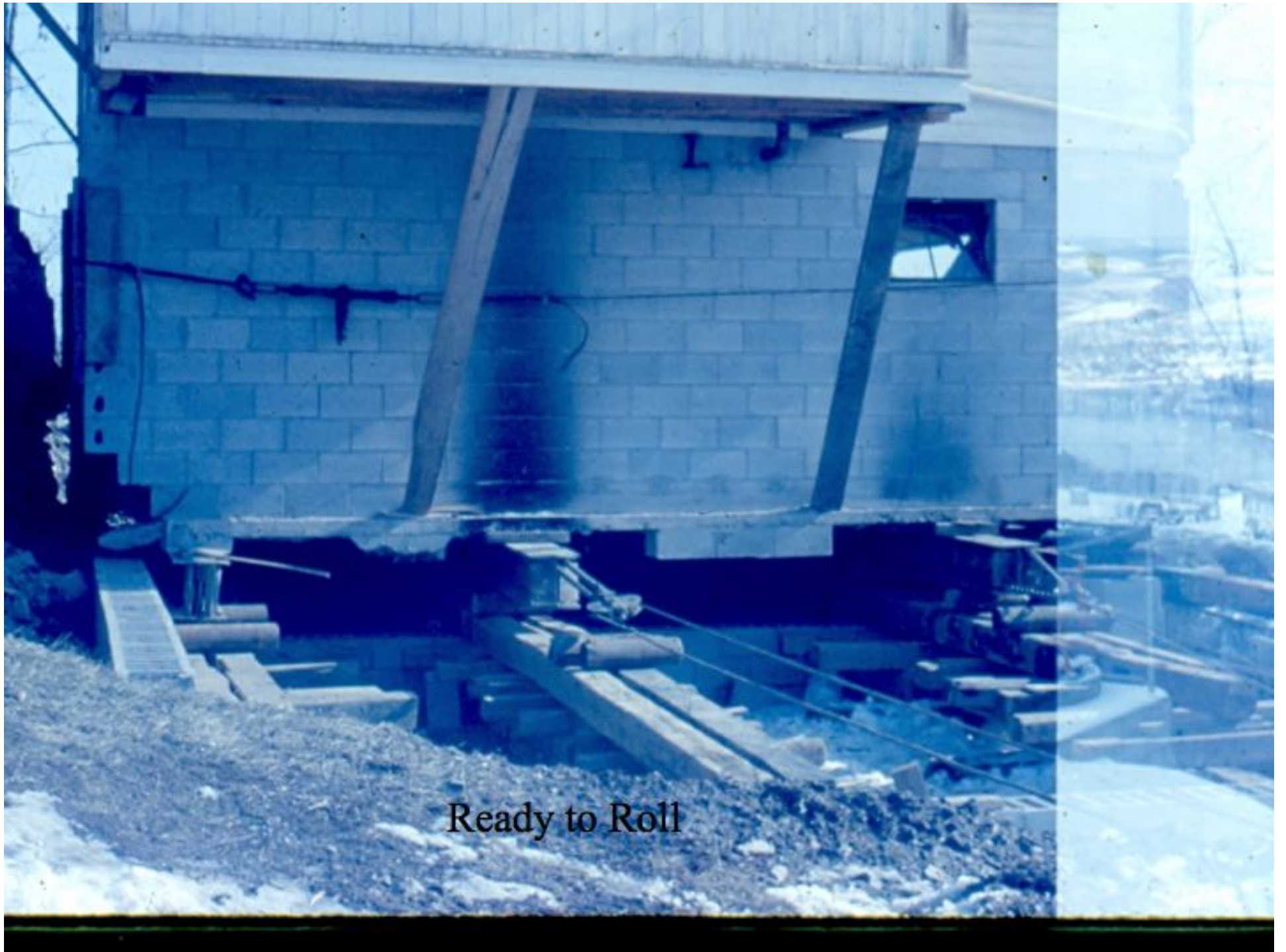
South End Preparations



Getting Ready to Place Supporting Beams-East Side



Supporting Beams in Place



Ready to Roll



Moving of Caretakers House Original Location 1961



Moving of Caretakers House- Rev. Robert Lundy & Rev.
Harold Spring man



On the Move



Inch by Inch



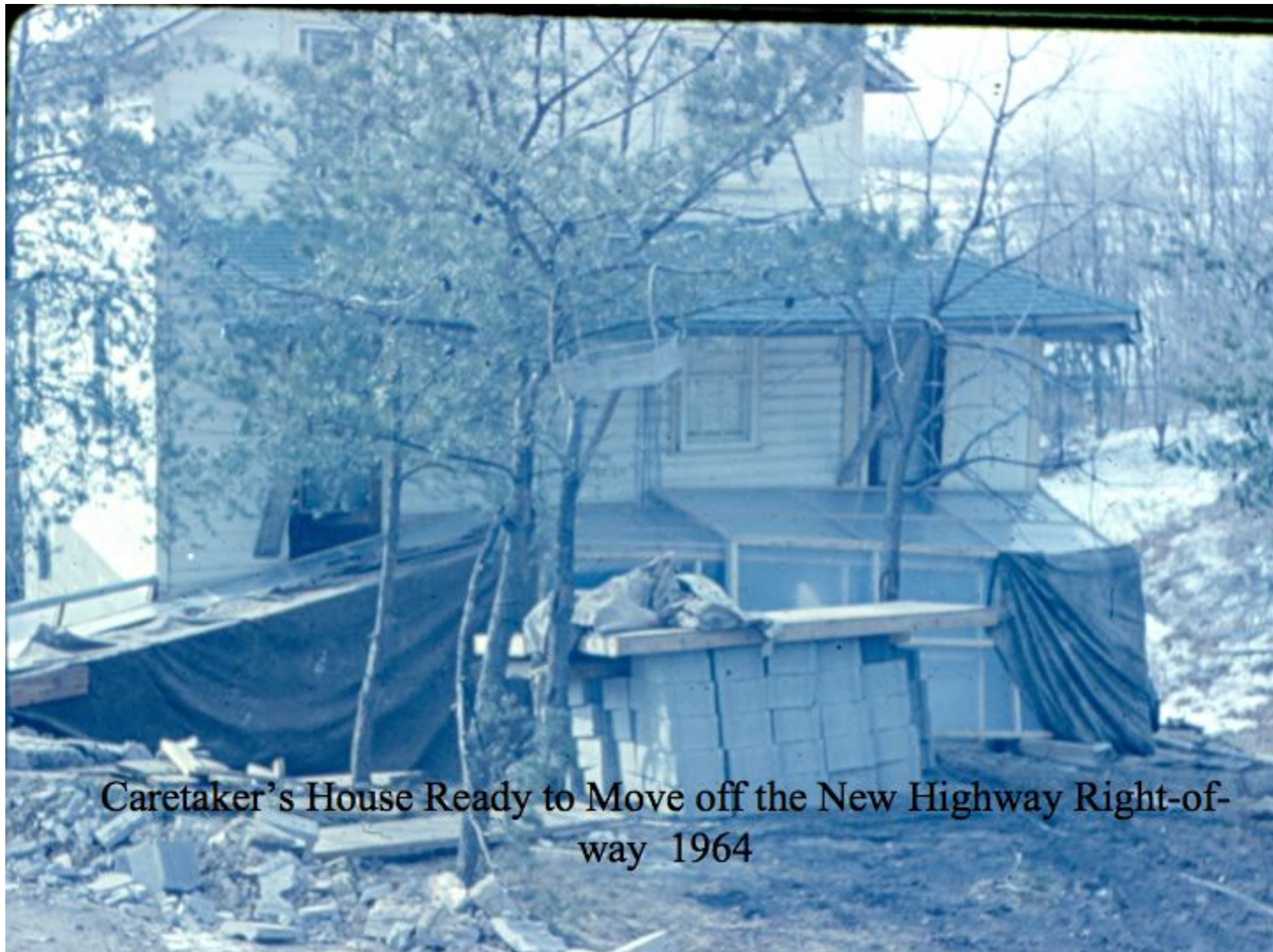
Laying Track



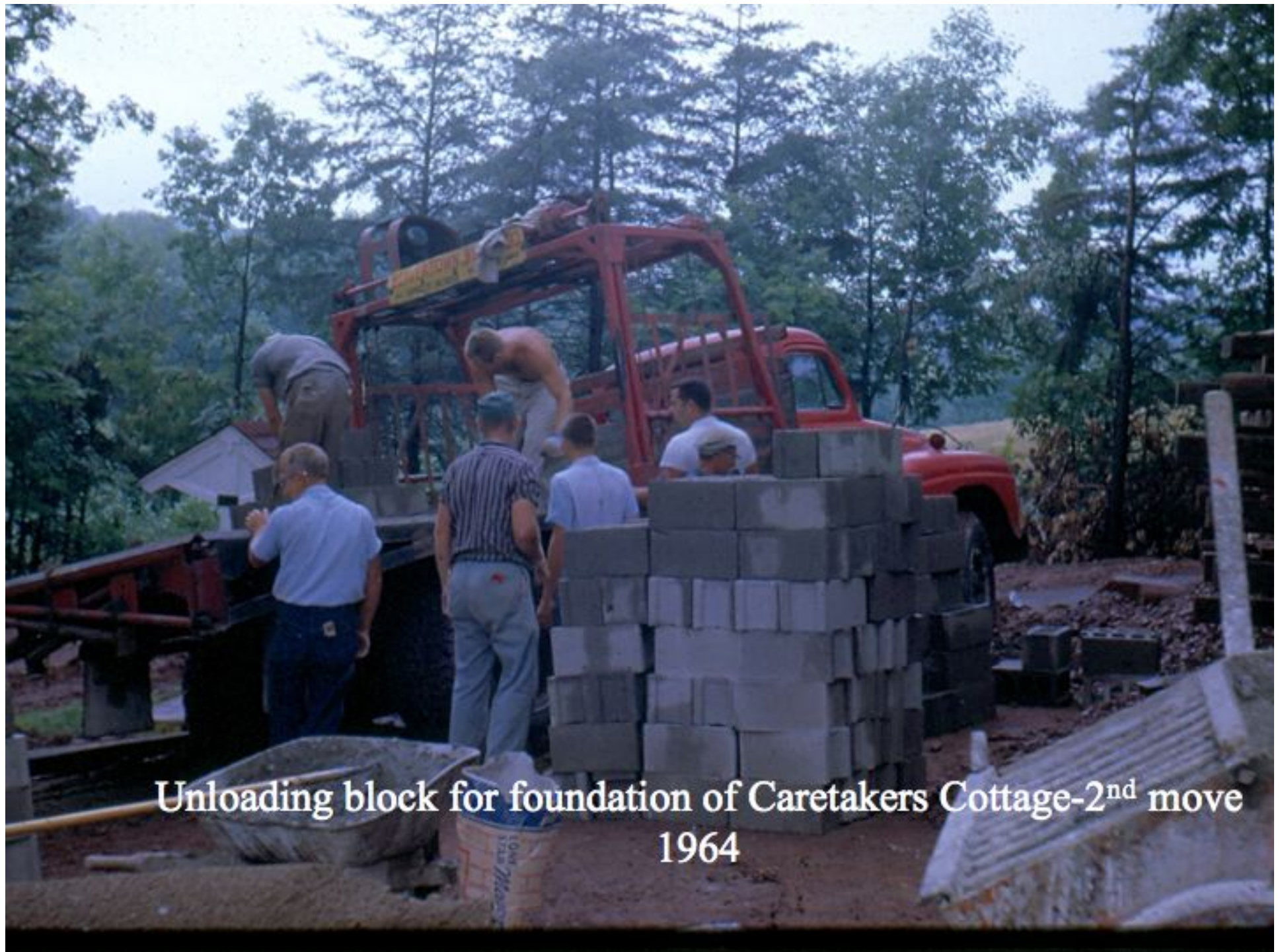
Down the Hill







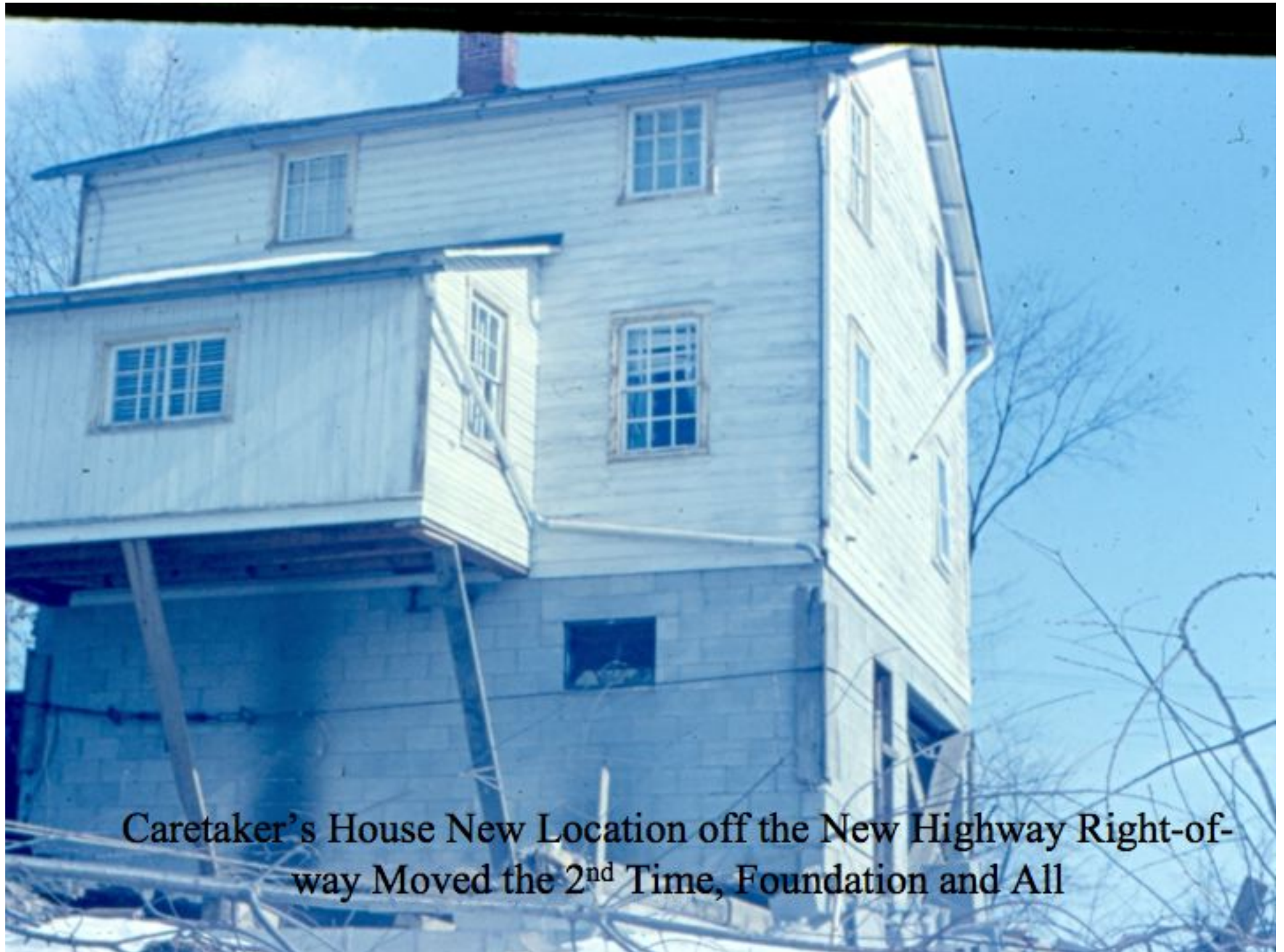
Caretaker's House Ready to Move off the New Highway Right-of-way 1964



Unloading block for foundation of Caretakers Cottage-2nd move
1964



Foundation Caretakers House-2nd Move 1964



Caretaker's House New Location off the New Highway Right-of-way Moved the 2nd Time, Foundation and All



Our Grand Entrance



Preparing demolition Of Entrance



Blasting Keystone







Going, Going



